

WATERFORD & SUIR VALLEY RAILWAY



□ **1997** - Steam Train Restoration Group

□ **1998** - Waterford Tourism Railway Development Group

□ **1999** - Waterford & Suir Valley Railway Project

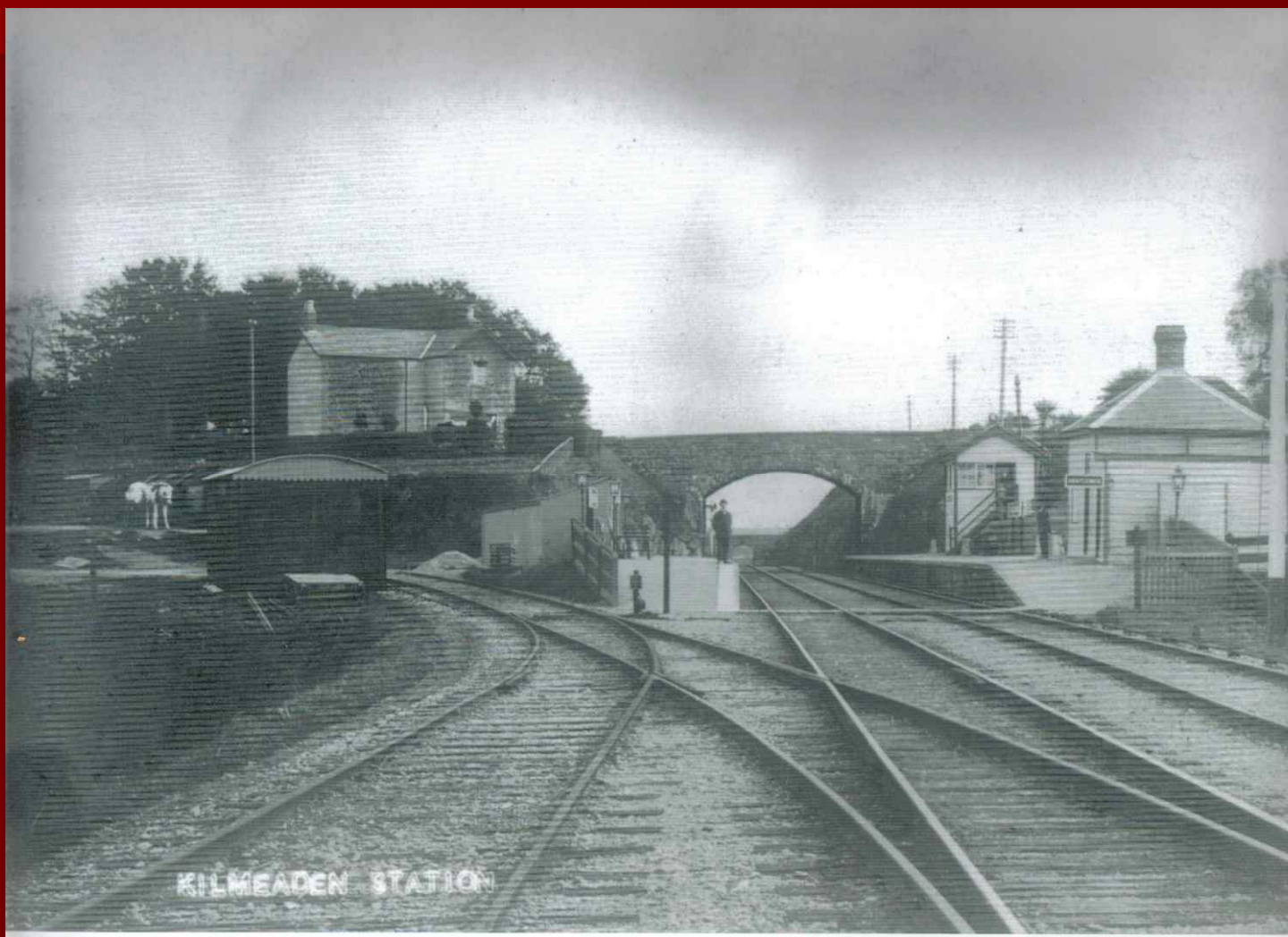
□ **2000** - Waterford & Suir Valley Railway became a FAS project and Limited Company

□ **2001** – The Company received Charitable Status

□ **2002** – Trial runs in August

□ **2003** – Opened as a tourist attraction

Kilmeadan Station



Kilmeadan Station 1967



Kilmeadan Station 1997



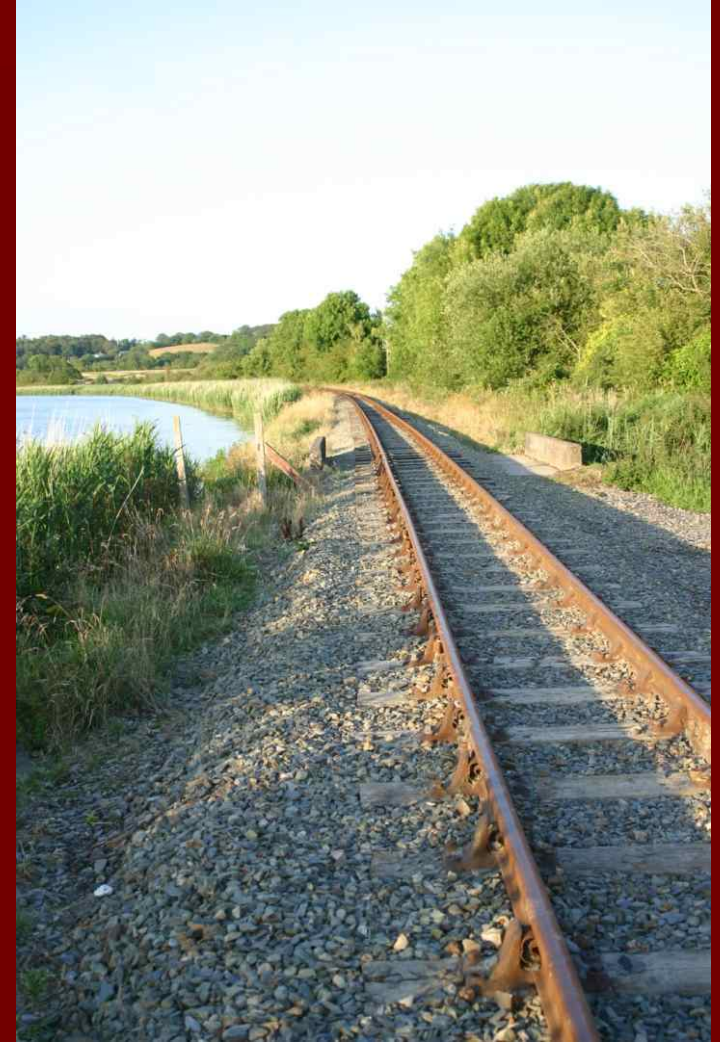
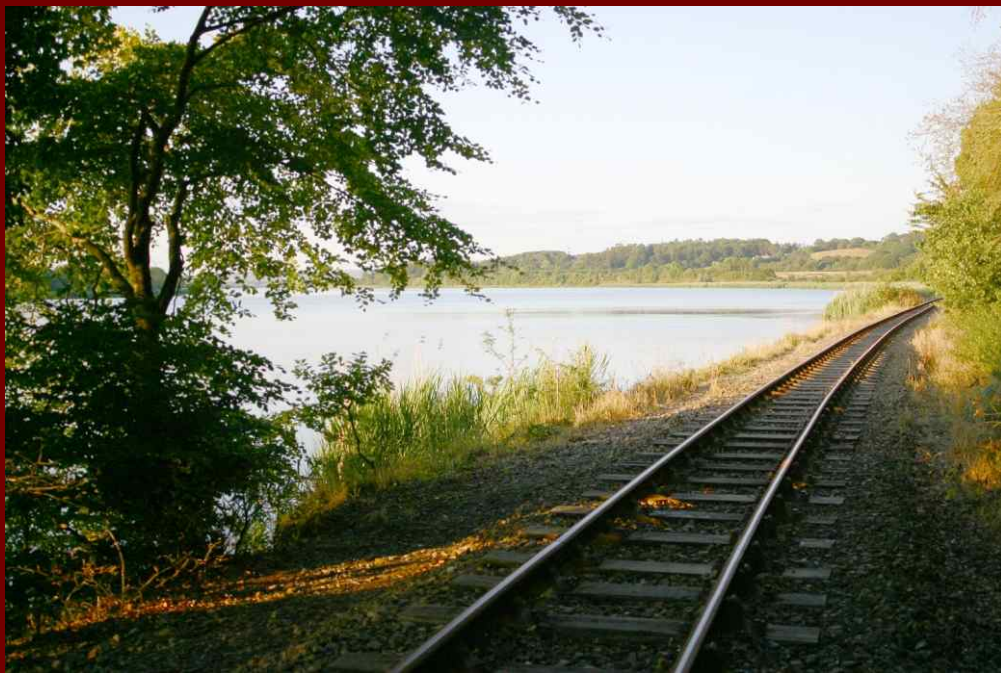
Kilmeadan Station 2007



Over Grown Track Bed



After Track Laying & Hedge Cutting



Tourist Experience offered





Rolling stock

- Simplex diesel locomotive
- Two carriages with a closed section on one end, open area with toast rack style seating.
- Capacity :
 - 85 persons – Mix of adults and children
 - 70 persons – Adults only



Station



Station

- Entrance off the R680
- Large car park
- Refurbished station and platforms
- Original Station signs and signal posts
- Converted Irish Rail carriage – Ticket office, shop and coffee shop
- Toilets facilities
- All facilities wheelchair accessible

Special Event trips



- **Spooky Express – Saturday Halloween Bank Holiday**

20 minute trip passing, cannibals, witches, spooks in a graveyard and demented creatures. Great lighting and sound system.

Six trips.



Special Event trips







Development Highlights

- 1999 – CIE support
- 2000 – 2005 The Waterford & Suir Valley Railway FAS Project
- 2003 – 2006 Celtic Railways Interreg project
- 2006
 - Car Park
 - Ticket office shop/coffee shop
 - Volunteer crew

Station Car Park



Ticket Office / Shop



- 2003 – 2009 – Welcomed over 140,000 visitors
- 2009 – Wins Waterford Chamber Business Excellence Hospitality and Tourism Award



Funding

Grants

- Heritage Council
- American Ireland Fund
- Cadbury's Trust
- Waterford Leader Partnership
- City & County Enterprise Board
- City & County Councils

Funded Projects

- ❑ FAS
- ❑ Interreg 111a

Sponsorship from Waterford Business & local Community

Fundraising events

Loans

City Enterprise Board

Clann Credo

AIB Bank Overdraft

Plans for 2010

- ❑ To Build a Train Shed / Workshop
- ❑ Signage at entrance and along the track
- ❑ Landscaping at entrance and around the Car park
- ❑ Picnic tables
- ❑ Extend the journey

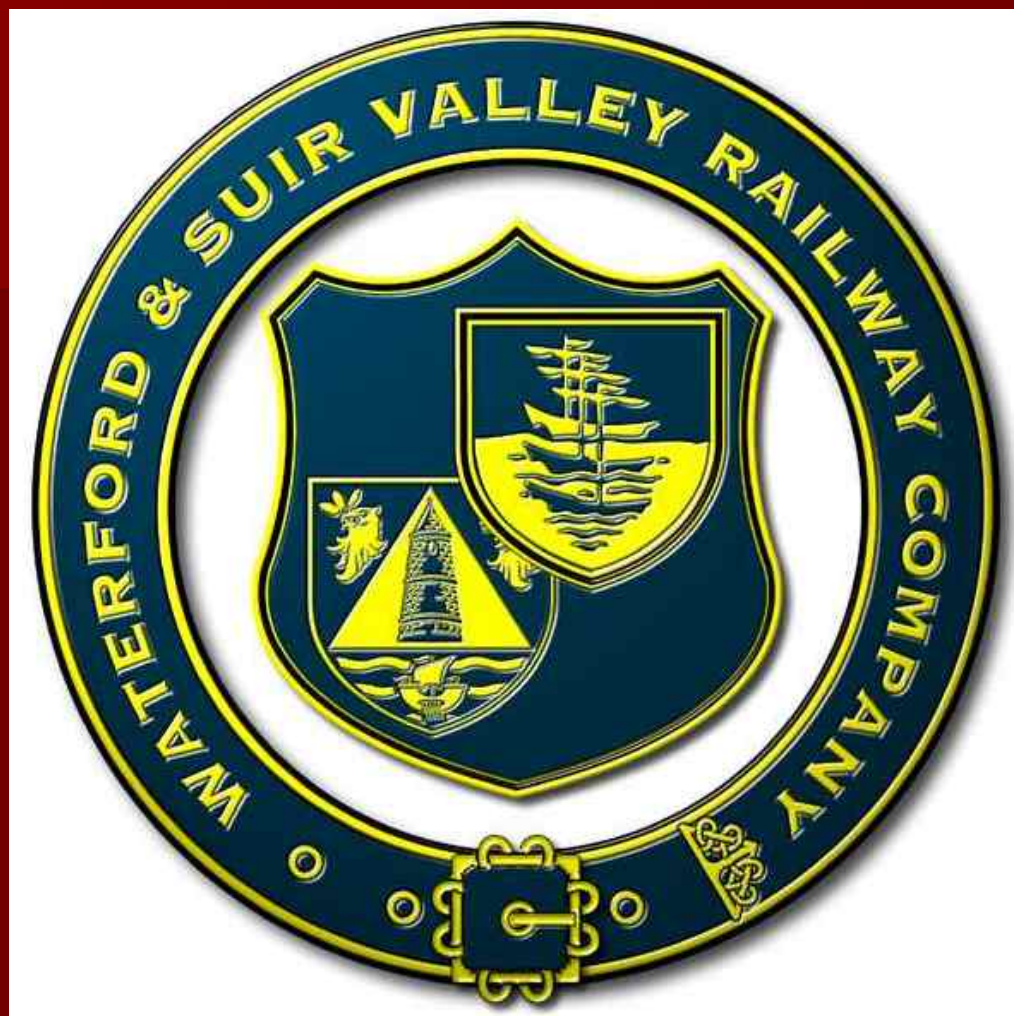
Tunnel under new By-Pass



Future Opportunities

- Excavation tours to the Woodstown Viking Site
- Station at WIT Site, Carriganore
- Access from Railway to Mount Congreve Estate Gardens
- Picnic areas, walkway and marina
- Extend track into Waterford City
- Commuter service
- Steam Engine





THANK YOU